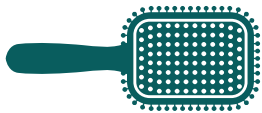


# BRUSHES

---



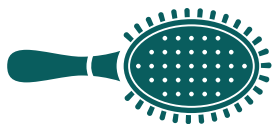
Do not brush through wet tangles, unless you are using a brush specifically designed for use on wet hair. Use a large comb or pick to untangle the hair first before using a regular hairbrush.



A paddle brush is for blow drying straight styles. A paddle style brush will cover the most hair at one time which cuts down on drying time. A paddle brush is generally not used to create volume.



A round brush is for encouraging bend, volume and texture. Vary the size of the round brush head according to the length or your hair and how loose or tight you want the style to be.



Cushion style brushes are best for medium-length hair. The flat back of the brush maximizes sleekness in the hair. This brush is good for a bob, a classic graduated cut and a disconnected cut.

*For more geeky beauty tips visit [colorgeekchic.com](http://colorgeekchic.com)*